

1424

SHDSL.bis Ethernet Access Device



The 1424 is OneAccess' new Ethernet Access Device with SHDSL.bis EFM technology. It targets business customers with a need for high speed symmetrical bandwidth at various local loop distances. With its advanced layer 2 features, the 1424 meets all the requirements for access to Metro Ethernet networks. The device is interoperable with all major IP DSLAM vendors.

HIGH SPEED DSL ACCESS

The 1424 SHDSL.bis EAD targets business customers with a need for high speed symmetrical bandwidth in various DSL networks and at various local loop distances. It includes a SHDSL.bis interface up to 4 copper pairs. This provides line rates up to 22Mbps on short distances and up to 10Mbps on operator standard loop lengths. The various pair bonding techniques make it suitable for any type of DSL infrastructure. The symmetrical line rates of SHDSL perfectly match the traffic profiles of business users. Providing Ethernet in the First Mile over SHDSL.bis, the 1424 is interoperable with the major IP DSLAM vendors.

METRO ETHERNET SERVICES

The 1424 relies on the robust TDRE software, the OneAccess Bridging and Routing Engine offering advanced layer 2 and layer 3 services. Ethernet functionalities include filtering and policing based on layer 2 and layer 3 characteristics, priority policing and shaping and advanced VLAN features. These features fully meet the requirements of operators deploying Metro Ethernet services.

With a bidirectional routing or bridging performance of 250Kpps, the 1424 SHDSL.bis EAD easily handles all layer 2 and 3 services even at 22Mbps.

SMOOTH MIGRATION FROM ATM TO EFM NETWORKS

Operators gradually migrate from ATM based access networks to Ethernet based access networks. The 1424 supports both network types. This means that a 1424 can be installed in an existing ATM network. When the network migrates to Ethernet, the same 1424 can be re-used in the Ethernet network without on-site intervention. The unique feature of combining ATM and EFM access in the same device leverages a smooth migration of the access network.

HIGH NETWORK AVAILABILITY

A dedicated Ethernet interface is available as a backup when the DSL network is not available. Traffic is automatically routed to the available network. Alternatively this interface can be used for a DMZ zone (De-Militarised Zone) on the customer's network.

ACCELERATED DEPLOYMENT AND SERVICE PROVISIONING

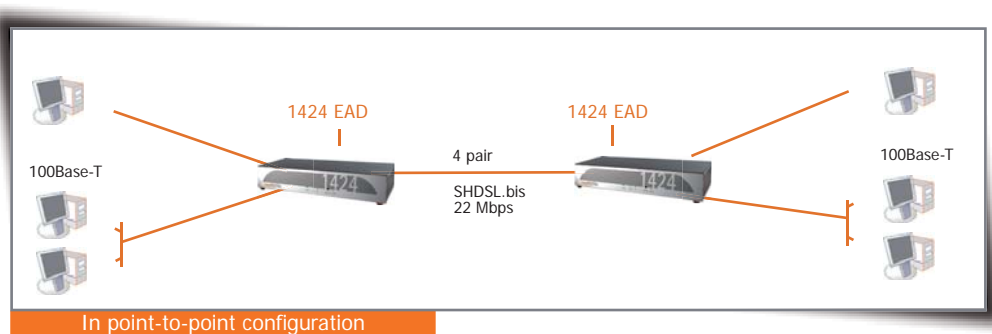
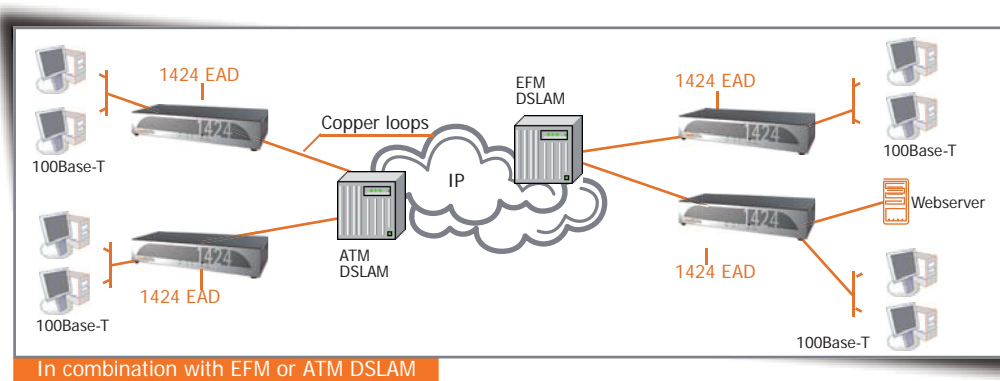
As all TDRE routers, the OneAccess 1424 SHDSL.bis EAD is manageable through a variety of maintenance and management tools. These include:

- A customisable Web-configuration utility
- A CLI to facilitate scripting
- Easy integration into Network element management platforms such as TMA or HP OpenView.

Technicians or the customer install the units with a standard configuration. Once connected to the network the 1424 SHDSL.bis EAD automatically retrieves all customer specific information from the service provider's databases and thus becomes ready for the service.

FEATURES AND BENEFITS

- SHDSL.bis EAD up to 4 pairs
- Connection speeds up to 22 Mbps over copper
- Advanced Layer 2 features
- EFM or ATM IMA pair bonding
- Extensive Maintenance and Management Functionalities



1424 SHDSL.BIS EAD SPECIFICATIONS

Basic hardware

- G.SHDSL.bis line interface: 1/2/4 pairs
- 1 Fast Ethernet uplink
- 4 port Fast Ethernet VLAN switch
- 1 console port
- IPsec encryption accelerator for DES, 3DES

SHDSL interface

- G.SHDSL.bis 1/2/4 line pairs
- RJ-45 connector
- ATM, EFM and ATM/EFM auto detect
- Bonding based on EFM or ATM IMA
- Synchronisation LEDs
- IEEE 802.3 2BASE-TL (aka 802.3ah) (for EFM operation)

Ethernet interfaces

- 10/100Mbps, half/full duplex with auto-sense
- Automatic cross-over
- Link status and activity LEDs

Console Port

- V.24/V.28
- RJ-45 connector

IP routing and bridging

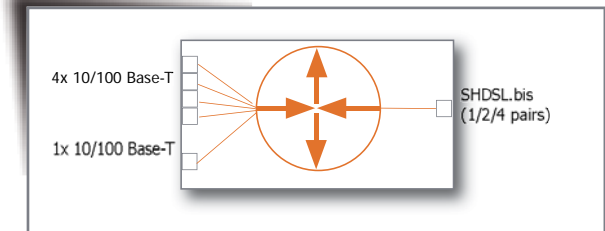
- Full forwarding performance of 64byte packets at maximum interface speed
- Routing and bridging performance: 250 Kpps
- Number of ATM PVCs: 31
- Number of IPSEC, L2TP or GRE tunnels: 25
- Number of VLANs: 200
- Number of bridge-groups: 13

Maintenance and management support

- Conform TDRE 12.0 (Total Dynamic Routing Engine)
- OAM IEEE 802.3 chapter 57 (for EFM operation)

Dimensions

- Desktop, wall mountable
- W x H x D: 270 x 50 x 145 mm
- Weight: 0.8 kg



Sales Codes

- > 208594: 1424 SHDSL 1P
- > 208597: 1424 SHDSL 2P
- > 208601: 1424 SHDSL 4P