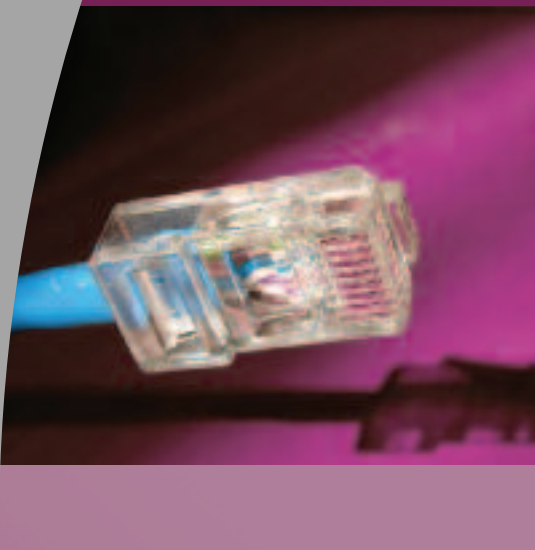


PHOENIX

HOME POWER

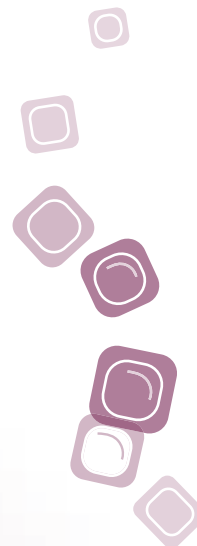
Homeplug Adapter



The Starbridge electronics **Phoenix HomePower** is an innovative solution which provides a convenient way to create a simple network through the existing electrical wiring. Just plug the HomePower into a power outlet and instantly share internet access, documents, MP3 Files, videos, pictures.

The HomePower is the ideal solution for anyone who wants to have a network, but does not want the clutter of messy wiring lying around the home or office. The **HomePower** is also perfect for individuals who like to work at different places of the home or office and for individuals who frequently relocate.

Extending an existing network has never been easier. Allow your power outlets to do "double-duty." Just plug the HomePower and enjoy your network!



ST  BRIDGE
NETWORKS



Features

- No new wires needed
- Multiple access points to the internet
- Operates on existing wiring
- Network Security
- Up to 14 Mbps. of data transmission
- Standard Ethernet Network Connectivity
- OS independent with TCP/IP protocol installed
- 56 bit DES Encryption ensuring network security
- AutoMDI/MDIX functionality

Protocols/Standards

- HomePlus 1.0 Specification, (IEEE 802.3 10/100 Ethernet (100 Mbps.) and IEEE 802.3u Fast Ethernet compliant
- 10/100 Mbps. AutoMDI/MDIX support
- 14 Mbps HomePlus 1.0 compliant
- CSMA/CA MAC control

Modulation Support

- OFDM, DQPSK, DBPSK, ROBO Carrier Modulation Support

Frequency Band

- 4.3 Mhz to 20.9 Mhz band

Quality of Service

- Forward Error Correction (FEC) support
- Channel adaptation which ensures that signal integrity is maintained even under harsh noise environment
- CSMA/CA with prioritization and ARQ for reliable delivery of Ethernet packets via packet encapsulation
- Four level prioritized random access method
- Segment bursting and contention-free access which ensures high throughput while maintaining low latency response and jitter performance

Security Support

- 5.6 bit DES encryption with key management for secure powerline communications (Use windows 98SE, 2000, ME, XP to enable encryption.)

Platform Support

- OS independent with TCP/IP protocol installed

Physical Specifications

LED Indicators

- 1 Power LED
- 1 Powerline activity status LED
- 1 Ethernet Link/Activity Status LED
- 1 AC adaptor (US style plug)

External Connectors

- 1 Electrical power socket
- 4 RJ45 for 10/100 Ethernet (AutoMDI/MDI-x)

User Requirements

- Ethernet interface
- TCP/IP protocol stack

Power Supply

- 90-264 VAC 50-60Hz with automatic switching

Measurements

- Dimension: 92 (L) x 66 (W) x 45 (H) mm (not including pins)
- Weight: Approx. 180 g.

Environmental

Temperature

- Operating: 0° to 40° Celsius
32° to 104° Fahrenheit
- Non-operating: -25° to 70° Celsius
-13° to 158° Fahrenheit

Humidity

- Operating: 30% to 80% relative humidity (Non-condensing)
- Non-operating: 30% to 95% Relative Humidity (Non-condensing)